

Kitchen Countertop Series  
**Postforming Saws**

 *Signature*

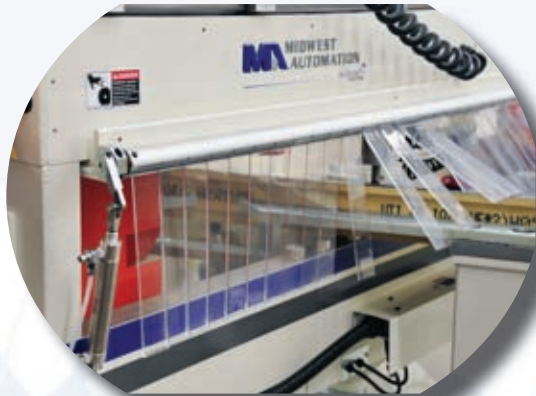
**MA** MIDWEST  
AUTOMATION

*Innovative Products for Innovative People*

midwest   
GROUP ONE



Midwest Automation's CS X Signature™ Cutting Station is an entry level machine designed to fabricate standard kitchen countertops and vanities up to 30 inches (760 mm) wide. The CS X has an overall cutting length of 42-1/2 inches (1080 mm) at 90° angle of cut, and 30 inches (760 mm) at 45° angle of cut. Maximum backsplash height is 4-7/8 inches (124 mm) from bottom of deck.



 **Safety Awareness Barrier**

OSHA-recognized barrier meets ANSI 01.1 safety requirements for woodworking machinery

**ROUTER SEQUENCE OF OPERATION**

**Sure-Grip Handle**



**Template Window**



**Router Template**



## Model CS X Cutting Station with Optional Heavy-Duty Roller Conveyors



### Standard Features

- Upper & lower frames are machined in a single set up at Midwest's state-of-the-art manufacturing facility
- Fixed stops at 22½°, 45°, and 90° (RH & LH side)
- Pneumatic locking pin
- 5 HP saw motor with heavy-duty arbor assembly
- Variable speed forward/reverse drive
- Router system includes four (4) router motors, guiding template, rotating template pin with ball bearing
- Two (2) pneumatic hold down clamps per side
- OSHA-recognized safety Awareness Barriers
- Heavy-duty rear fence
- Three (3) dust collection hookups
- Plexiglass shield
- Ergonomically designed with low profile control panel and sure-grip operator handles
- Sixteen (16) inch (406 mm) sawblade & four (4) router bits
- Safety interlocks and emergency stop

### Optional Equipment (available on all models)

- Standard & heavy-duty roller conveyors
- Special wheel conveyors
- Special fences with flip-over stops
- TigerStop electronic fence with automatic positioning
- Laser guideline kit
- Dust manifold
- Variable miter kit with digital readout
- Backsplash clamps
- Support rings for short parts
- Dust enclosure kit
- 5th router motor kit

**Rotating Pin**



**Router Assembly**



**Finished Product**





## Model CS X/XL/XLT Cutting Stations

*Signature™ Cutting Stations are fabricated, welded, machined, assembled and tested at Midwest Automation's 45,000 square foot manufacturing facility located in Minneapolis, Minnesota using the latest in machining and fabrication equipment technology.*

*This allows Midwest to control the entire process from ordering raw materials to shipping the machines ensuring the highest quality standards are met.*

*Proudly Made in USA.*



### King Pin & Bearing Assembly

Large diameter king pin & precision bearing mounted in machined pocket ensures stability as it rotates on the lower frame



### Lower Frame Weldment

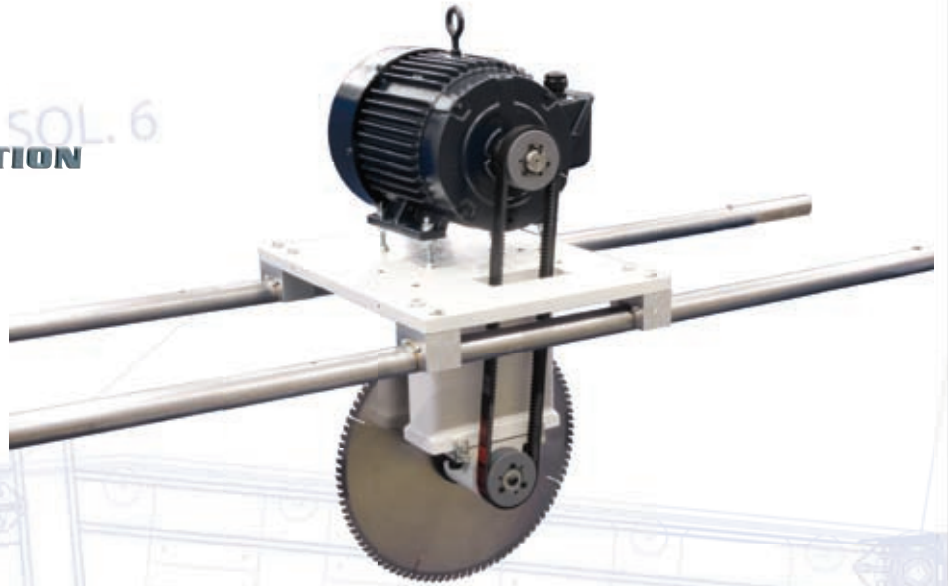
Top surface machined flat to  $\pm .005$  for smooth operation



**Mazak® CNC**

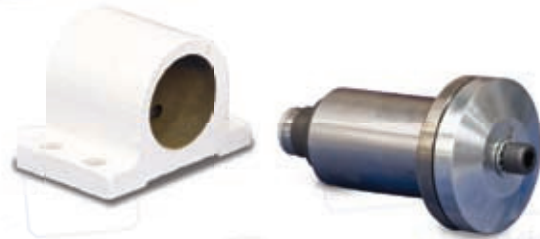
Upper & lower frame  
in single set up to maintain

SOL. 11



**Saw Carriage**

Mounted on turned, ground and polished rails & bronze bearings for years of dependable service



**Arbor Assembly**

Heavy-duty arbor assembly with two (2) precision ball bearings supported by a machined cast iron housing; pre-assembled and bench tested to ensure vibration-free operation



**Rear Fence**

Front edge is machined straight to +/- .0025 to ensure cutting accuracy

**Vertical Mill**

Parts are machined to the highest tolerances

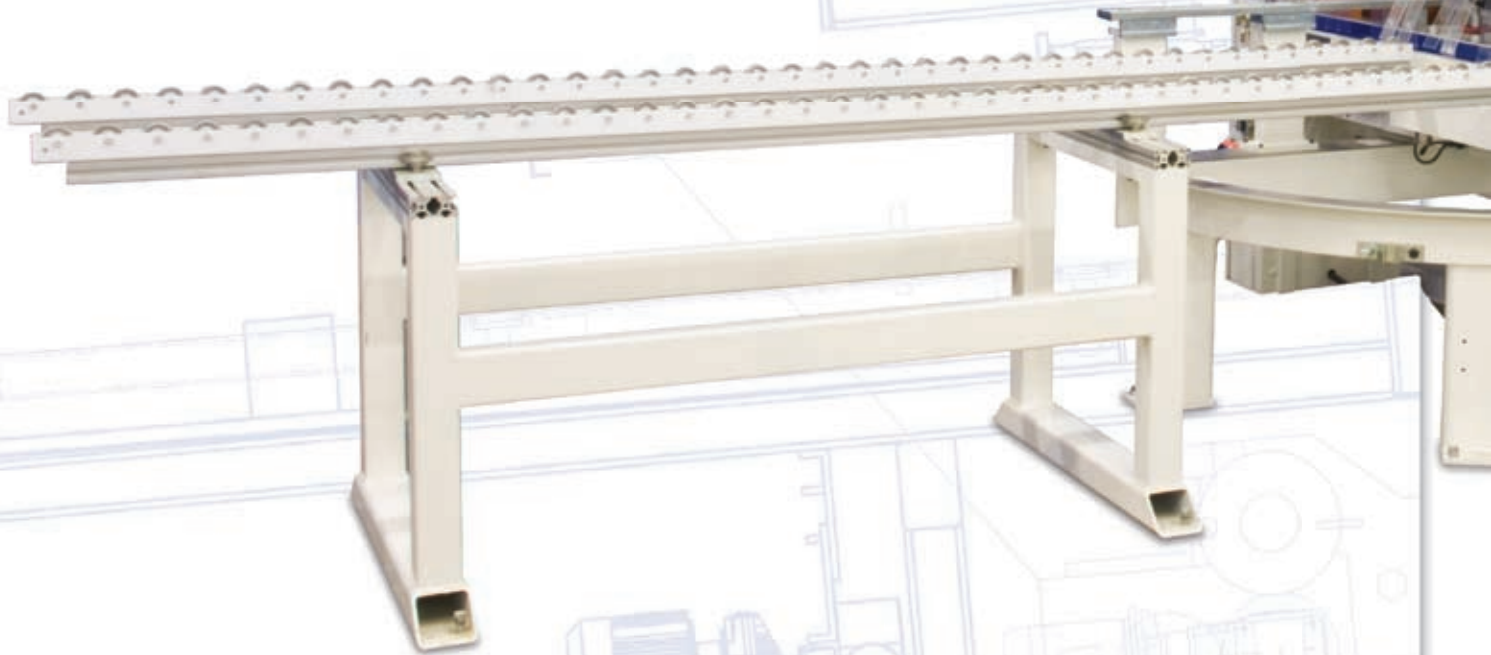
LS6 & 7

477.75



## Model CS XL/XLT Cutting Station with Special Wheel Conveyors

Midwest Automation's CS XL Signature™ Cutting Station is our most popular saw and is designed for fabricating a wide variety of kitchen countertop and vanity sizes. The CS XL has an overall cutting length of 53-1/2 inches (1360 mm) at 90° angle of cut, and 37-1/2 inches (950 mm) at 45° angle of cut. Maximum backsplash height is 4-7/8 inches (124 mm) from bottom of deck.



The CS XLT Signature™ Cutting Station is the same size as the CS XL with an increased cutting height using a 20 inch (508 mm) diameter sawblade. This reduces the overall cutting length to 50 inches (1290 mm) at 90° angle of cuts, and 36 inches (915 mm) at 45° angle of cut, but increases the maximum backsplash height to 6-7/8 inches (172 mm) from bottom of deck.

*Standard Features* are the same as offered on the CS X model saw.

### Accessories

**Standard Conveyor**



**Laser Guide**



**Dust Manifold Kit**



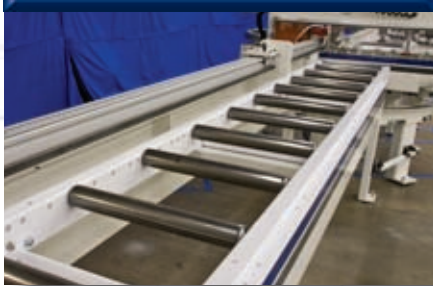


### Accessories

**Flip-Over Stop**



**Heavy-Duty Roller Conveyor**



**TigerStop**  
fast and accurate...every time

*Electronic fence with automatic positioning*



**Dust Enclosure Kit**



**Variable Miter**



**Backsplash Clamp**



**Support Rings**





*Innovation. Not Imitation.*

The **Midwest Automation Family of Signature Cutting Stations** produce fast, accurate, precision miter cuts and drawbolt mortises when fabricating postformed kitchen countertops. One operator can produce a complete miter joint with draw bolt mortises in under three minutes. Reduced handling cuts cycle times, operator fatigue and product damage.

A great machine, backed by over 50 years of experience, Midwest continues to set the industry standard continually improving product design as technology progresses.

***Benefits of the Signature Cutting Station include:***

- Precision Results
- Unparalleled Dependability & Service
- Best Resale Values in the Industry

***Supplying the Kitchen Countertop Industry for over 50 years!***



Photograph "Canyon Creek" Courtesy of WilsonArt®



Midwest Group One LLC  
2645 26th Avenue South  
Minneapolis, Minnesota 55406  
tel. 612.721.5347  
[www.midwestgroupone.com](http://www.midwestgroupone.com)